


CAMPING & CARAVANNING



From **MAINTENANCE** to **TRAVEL ESSENTIALS**
we have everything you need including:

NON-METERED STATIC CARAVAN CONNECTION UNIT IP44



2559-2377
ONLY £76.95 +VAT

SEE PAGE 02

CONVERSION FLY LEAD ADAPTOR



2635-2079
ONLY £4.50 +VAT

SEE PAGE 03

HELMET-MOUNTABLE LED HEAD TORCH



2235-9523
ONLY £19.95 +VAT

SEE PAGE 05

12 - 230V 300W INVERTER



1080-3271
ONLY £27.95 +VAT

SEE PAGE 08

 **390 STORES**
NATIONWIDE

 **OVER 35,000**
ITEMS IN STOCK ONLINE

 **OVER 300 BRANDS**
AVAILABLE

 **FREE DELIVERY**
LOCALLY



**YOUR
ELECTRICAL
EXPERTS**

IN-STORE | CEF.CO.UK | TRADE CATALOGUE | APP

All products are subject to availability and prices are correct at the time of print. Offer only valid at CEF stores shown. Prices valid until 4pm on 31st August 2021.

27865_03_2021

METERED AND NON-METERED STATIC CARAVAN CONNECTION UNITS IP44

ROLEC
Caravan Floor-Less

18th
EDITION

- Safety interlock switched outlets – 18th Edition compliant
- Hard-wearing and cost-effective hook-up solution
- Built-in overload and fault current protection RCBO per outlet: C Curve 6 kA, RCD Type AC 30 mA
- Accurate kWh meter module per outlet included [metered outlet units only]
- Internal wiring included



FROM
£76.95
+VAT

Requires:

- Mounting post – sold separately [selectable by Enclosure Type]

Code	Current Rating	Outlets	Enclosure Type	1+
Non-Metered Units – 230V				
2559-2377	16A	1	RE115F	£76.95
Metered Outlet Units – 230V				
2552-2027	16A	1	RE115F	£103.95
2559-2404	16A	2	RE115F	£139.95
2559-2392	32A	1	RE115F	£103.75

METERED AND NON-METERED STATIC CARAVAN CONNECTION UNITS IP44

ROLEC
Caravan Floor-Less

- Hard-wearing and cost-effective hook-up solution
- Built-in overload and fault current protection RCBO per outlet: C Curve 6 kA, RCD Type AC 30 mA
- Accurate kWh meter module per outlet included [metered outlet units only]
- Internal wiring included



FROM
£40.95
+VAT

Requires:

- Mounting post – sold separately [selectable by Enclosure Type]

Code	Current Rating	Outlets	Enclosure Type	1+
Non-Metered Units – 230V				
1402-6282	16A	1	RE113F	£40.95
Metered Outlet Units – 230V				
1402-6294	16A	1	RE113F	£54.95
1402-6330	16A	2	RE115F	£86.50
1402-6300	32A	1	RE115F	£56.50

METERED AND NON-METERED TOURING CARAVAN CONNECTION UNITS IP44

ROLEC
Caravan Floor-Less

18th
EDITION

- Safety interlock switched outlets – 18th Edition compliant
- Hard-wearing and cost-effective hook-up solution
- Built-in overload and fault current protection RCBO per outlet: C Curve 6 kA, RCD Type AC 30 mA
- Accurate kWh meter module per outlet included [metered outlet units only]
- Internal wiring included



FROM
£76.95
+VAT

Requires:

- Mounting post – sold separately [selectable by Enclosure Type]

Code	Current Rating	Outlets	Enclosure Type	1+
Non-Metered Units – 230V				
2559-2377	16A	1	RE115F	£76.95
2559-2419	16A	2	RE115F	£109.95
Metered Outlet Units – 230V				
2552-2027	16A	1	RE115F	£103.95
2559-2404	16A	2	RE115F	£139.95

METERED AND NON-METERED TOURING CARAVAN CONNECTION UNITS IP44

ROLEC
Caravan Floor-Less

- Hard-wearing and cost-effective hook-up solution
- Built-in overload and fault current protection RCBO per outlet: C Curve 6 kA, RCD Type AC 30 mA
- Accurate kWh meter module per outlet included [metered outlet units only]
- Internal wiring included



FROM
£40.95
+VAT

Requires:

- Mounting post – sold separately [selectable by Enclosure Type]

Code	Current Rating	Outlets	Enclosure Type	1+
Non-Metered Units – 230V				
1402-6282	16A	1	RE113F	£40.95
1402-6456	16A	2	RE113F	£53.75
Metered Outlet Units – 230V				
1402-6294	16A	1	RE113F	£54.95

GALVANISED STAKES / MOUNTING POSTS – 1.5 M

- Galvanised steel post for sturdy and long lasting caravan hook-up mounting
- Select the required post by enclosure type

Code	For Use With Enclosure Type	1+
1402-6396	RE113F	£13.50
1402-6402	RE115F	£13.50



ONLY
£13.50
+VAT

ROLEC
Caravan Floor-Less

16A MOBILE MAINS POWER UNIT WITH RCD

- Suitable for caravan and motorhome site applications
- 3 x 13A Mains sockets protected by a 10A DP MCB and 30mA RCD
- Polarity warning indicator



ONLY
£34.95
+VAT

Code	Cable Length	Outputs	1+	3+
2635-2070	15 m	3	£34.95	£33.50

EXTENSION LEADS

- Suitable for caravan and motorhome site applications
- IP44
- BS EN 60309



FROM
£17.95
+VAT

Code	Current Rating	Cable Length	1+	3+
Cable Size 1.5 mm ² - 230V				
2635-2076	16A	25 m	£23.95	£21.95
Cable Size 2.5 mm ² - 230V				
2635-1245	16A	10 m	£17.95	£16.95
2635-1248	16A	15 m	£32.95	£29.95
2635-2073	16A	25 m	£37.95	£34.95

CONVERSION FLY LEAD ADAPTORS

- Suitable for camping, caravanning and on-site generators
- BS EN 60309



FROM
£4.50
+VAT

Code	Description	1+	3+
UK Conversion Lead - 230V			
2635-2079	13A 3 Pin Plug to 16A 3 Pin Socket	£4.50	£4.25
Conversion Lead (Domestic) - 230V			
2635-1254	16A 3 Pin Plug to 13A 3 Pin Socket	£4.50	£4.25
Continental Conversion Lead - 230V			
2635-1239	Continental Schuko 3 Pin Plug to 16A 3 Pin Socket	£4.50	£4.25

3 WAY Y SPLITTER

- Suitable for caravans, motorhomes and general site applications
- Corrosion and impact-resistant
- Safe and reliable
- IP44
- BS EN 60309-1/2



ONLY
£9.95
+VAT

Code	Current Rating	Voltage	Colour	1+	3+
2635-1236	16A	230V	Blue	£9.95	£9.25

EMPTY CABLE REEL

- Suitable for site cables and extensions
- Cable length capacity: 25 m



ONLY
£8.95
+VAT

Code	1+	3+
2635-1251	£8.95	£7.95



GO TO CEF.CO.UK TO VIEW THE FULL RANGES

1.2 kW INFRARED QUARTZ PATIO HEATER



- Uses radiant heat to warm surfaces – not the air around it
- Specifically designed for outdoor use
- Toughened safety glass
- Gland cable entry
- Lamp life: 3,000 hrs
- Mounted: Wall
- IP54
- Guarantee: 1 Year



Includes:

- 2 x Infrared lamps
- Mounting bracket kit

ONLY
£134.95
+VAT

Code	Colour	Height	Width	Depth	1+	3+
1424-6734	Black	190 mm	400 mm	195 mm	£134.95	£129.95

2 kW FREESTANDING CONVECTOR HEATER



- Thermostatic control for instant, adjustable warmth
- Heat settings: 750W, 1.25 kW and 2 kW
- Adjustable thermostat: 0 - 35°C
- Overheat safety cut-out
- Exchange warranty: 1 Year



ONLY
£14.95
+VAT

Code	Height	Width	Depth	1+	3+
Standard					
0863-6278	380 mm	565 mm	170 mm	£14.95	£14.50

OSCILLATING DESK FAN



- Quiet operation
- Adjustable tilt
- Guarantee: 1 Year



FROM
£11.95
+VAT

Code	Size	Wattage	No. of Speeds	1+
2025-5446	9"	30W	2	£11.95
2025-5443	12"	40W	3	£13.95



HELMET-MOUNTABLE LED HEAD TORCH

UNILITE

- Adjustable non-slip silicone lined head strap
- Helmet-mountable
- 45° Rotational head
- CREE LED
- 7 Light settings
- IPX6: Highly water resistant
- Guarantee: 1 Year



Includes:

- 3M™ VHB™ Helmet mount
- 3 x Batteries: AAA 1.5V

Code	Run Time	Lumens	Beam Distance	1+
2235-9523	5 hrs	200 lm	90 m	£19.95

ONLY
£19.95
+VAT

LED RECHARGEABLE INSPECTION LAMP AND TORCH

ENGEX

- Magnetic base and swivel stand for hands-free convenience
- High-power SMD LEDs
- Lumen output: 1,000 lm [200 lm torch]
- 2A USB Charging
- IP54: Splashproof
- Guarantee: 1 Year



Includes:

- Belt clip
- Mains / car charger
- Rechargeable battery: Li-Ion [6,700 mAh]

Code	Run Time	Lumens	1+
2522-2270	3 - 24 hrs	1000 lm	£37.95

ONLY
£37.95
+VAT

LED MINI COMPACT RECHARGEABLE SITE LIGHTS

UNILITE

- Super tough construction
- High-power white COB LED
- Glow-in-the-dark strip for extra visibility
- 180° Adjustable handle / hook / stand
- Strong magnets within the base
- IPX5



Includes:

- Li-Ion battery
- Micro-USB charging cable

Code	Run Time	Lumens	Beam Distance	1+
[Standard LED - Battery: 3.7V 2,000 mAh 3 hrs charge]				
2562-9952	3.5 - 18 hrs	500 lm	24 m	£39.95

ONLY
£39.95
+VAT



GO TO CEF.CO.UK TO VIEW THE FULL RANGES

CARBON MONOXIDE ALARM



- Electrochemical sensor ensures accuracy
- Automatic sensor test and end-of-life indication
- Mounted: Surface or freestanding
- Decibel rating: 85 dB(A) @ 3 m
- Battery type: Lithium sealed-in
- Guarantee: 7 Years



ONLY
£26.50
+VAT

Code	1+	4+
1607-4130	£26.50	£24.95

DRY POWDER FIRE EXTINGUISHER



- Suitable for class B and C fires: Flammable liquids and electrical equipment
- Aluminium lightweight body
- Factory sealed
- Controlled discharge and easy to operate
- BS 6165:2002
- Guarantee: 1 Year



ONLY
£10.95
+VAT

Code	Size	Fire Rating	Discharge Time	Discharge Range	1+
1209-8407	0.6 kg	21B	6 secs	3 m	£10.95

HARD PACK FIRE BLANKET – 1 M x 1 M



- Glass fibre blanket for domestic and light industrial use
- Supplied in red hard plastic container for surface mounting
- Ideal for use in small kitchens, homes, caravans and some commercial applications
- BS EN 1869
- Guarantee: 1 Year



0017-1748
ONLY
£14.95
+VAT

VEHICLE FIRST AID KIT



Kit contents:

- 2 x Non-adherent dressing pads – 5 cm x 5 cm
- Non-adherent pad – 7.5 cm x 7.5 cm
- 20 x Assorted washproof plasters
- 2 x Triangular bandages
- Medium dressing
- Large dressing
- Resuscitation mouthshield with valve
- Disposable gloves [pair]
- Finger bandage
- No. 16 eyepad
- 6 x Moist wipes
- Survival blanket
- Instant ice pack
- First aid scissors
- Conforming bandage – 7.5 cm x 4 m
- Microporous tape

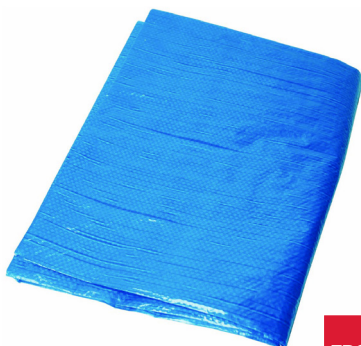


1217-7277
ONLY
£15.95
+VAT

TARPAULINS



- Tearproof laminated tarpaulin
- Waterproof and treated with a UV filter for durability and extended life
- Mould and mildew resistant
- Rust resistant metal grommets at 1 m intervals



FROM
£ 2.50
+VAT

Code	Length	Width	1+	3+
0175-5940	2.4 m	1.8 m	£2.50	£2.25
0175-5937	3.6 m	3 m	£4.50	£4.25
0175-5934	4.8 m	3.6 m	£9.25	£8.50
0175-5949	6.1 m	3.6 m	£10.50	£9.75
0175-5946	6.1 m	4.8 m	£13.95	£12.95
0175-5943	9 m	6.1 m	£25.95	£24.25

28 PCE ASSORTED BUNGEE CORD SET



- Rubber bungee cords offering increased durability with a maximum 70% stretch
- Assorted sizes for all applications; ideal for the home
- Plastic-coated steel hooks to protect surfaces from scratching / damage



Set contents:

- 2 x 1 m Bungee cords
- 2 x 800 mm Bungee cords
- 4 x 800 mm Bungee cords
- 6 x 450 mm Bungee cords
- 6 x 250 mm Bungee cords
- 4 x Ball bungee cords
- 4 x Tarpaulin clips
- Carry case

2641-1956
ONLY
£ 19.95
+VAT

2 PCE RATCHET STRAP SET



- Durable polyester webbing for securing loads
- Steel ratcheting mechanism with plastic caps for added user comfort
- Dipped metal hooks to protect surfaces from scratching / damage



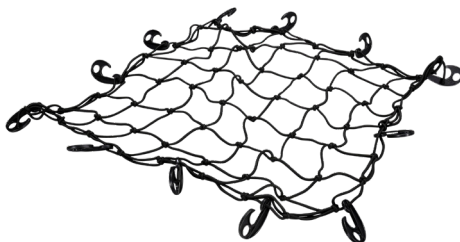
ONLY
£ 8.50
+VAT

Code	Length	Width	1+
2641-2016	4.5 m	25 mm	£8.50

12 HOOK BUNGEE CARGO NET



- Keeps vehicle loads safe and secure whilst in transit



ONLY
£ 8.95
+VAT

Code	Length	Width	1+
2641-2031	750 mm	750 mm	£8.95



FOLDABLE SACK TRUCK

- Foldable sack truck for easy storage
- Folded size: 29% "H) x 15" "W) x 2¼" "D)
- Open size: 39% "H) x 15¼" "W) x 13% "D)
- Nose plate size: 15" "W) x 11" "D)
- 5" Solid rubber wheels
- Capacity: 150 lbs
- Guarantee: 1 Year



2264-3053

ONLY
£34.95
+VAT

ENGEX

FIBREGLASS HOP-UP PLATFORM

- Suitable for light trade use
- Easy set up, storage and transportation
- Double-locking hinges for added safety
- Surface: 600 mm x 600 mm
- Static load rating: 150 kg [Max.]



ONLY
£74.95
+VAT

ENGEX

Code	Platform Height	No. of Steps	1+
0697-5412	480 mm	2	£74.95

12 - 230V 300W INVERTERS

- Allows 12V batteries to power 230V AC mains appliances
- Overload and short circuit protected
- Guarantee: 3 Years

Includes:

- Cigarette lighter plug
- Battery clamps



SILVERLINE

FROM
£27.95
+VAT

Code	No. of Sockets	Max. Continuous Power Output	1+
1080-3271	1	300W	£27.95
1258-6627	2	2 x 500W	£89.95

BATTERY CHARGER AND STARTER

- Suitable for use with SLA, gel, AGM and MF batteries
- Mode selection control panel, polarity protection and onboard cord and clamp storage
- Microprocessor controlled battery charger with battery recondition / desulphation mode
- Large, easy to read LCD screen
- Charging voltage: 12V
- Switchable charge rate: 2A, 5A, 10A and 20A
- USB Ports: 1A and 2.4A
- Warranty: 1 Year



ONLY
£89.95
+VAT

Code	Voltage Rating	1+
2641-2007	12V	£89.95

12V MINI DIGITAL AIR COMPRESSOR

- Heavy-duty plastic housing with built-in LED lamp and digital pressure gauge
- Automatically cuts down when required pressure is reached
- Power cord length: 3 m
- Air hose length: 500 mm
- Max. Pressure: 150 psi
- Average inflation time: 4.5 mins



2641-2019
ONLY
£28.50
+VAT

Includes:

- 3 x Nozzles: Tapered, inflating and needle

DIGITAL TYRE PRESSURE GAUGE

- Handy size dual reading tyre pressure gauge
- Pressure reader is for guidance only and should be checked with a gauge to BS EN12645:1999
- Max. Pressure: 100 psi (7 bar)



2641-2013
ONLY
£9.95
+VAT

Includes:

- Battery: 3V Lithium

JUMP LEADS

- Suitable for 6V / 12V systems
- PVC Insulated cables
- Heavy-duty spring-loaded clamps
- Guarantee: 1 Year



ONLY
£8.95
+VAT

Includes:

- Zipped storage bag

Code	Voltage	Length	1+
2641-1992	12V	2 m	£8.95

FOLDABLE FUNNEL

- Malleable funnel made from flexible aluminium with a nitrile rubber coating
- Bends and forms to create a leak proof channel for draining or filling
- Retains shape and can be used time and time again
- Resistant to antifreeze, petrol, diesel, transmission oil, engine oil and brake fluid etc



ONLY
£14.95
+VAT

Code	Length	Width	1+
2641-2004	368 mm	167 mm	£14.95

10 LTR PLASTIC FUEL CAN

- Made using high-quality HDPE plastic



2641-2037
ONLY
£13.50
+VAT

Includes:

- Plastic pouring hose
- Tethered plastic screw cap

WATER CONTAINERS WITH TAP

- Suitable for storing, carrying and dispensing water
- 360° Swivelling tap and easy-flow vent for ease of filling
- Made using high-quality HDPE plastic



FROM
£15.95
+VAT

Code	Capacity	1+
2641-2043	9.5 Ltr	£15.95
2641-2040	25 Ltr	£19.95

HEAVY-DUTY FRONT SEAT COVER

- Suitable for car and van single seats fitted with side airbags
- Protects from mud, oil, grease, sweets and other sticky substances
- Washable with polypropylene inner and straps to secure cover to seat
- Aperture for side airbags

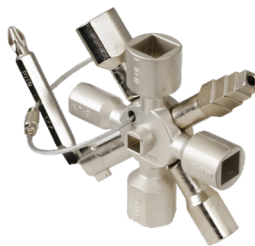


ONLY
£18.50
+VAT

Code	Length	Width	1+
2641-2034	1380 mm	650 mm	£18.50

10-IN-1 MULTIFUNCTIONAL TWINKEY®

- Eight arm: Two four-way spider keys connected in a space-saving way using magnets
- Reversible bit: SL1 x 7 mm and PH2 cross slot
- Key and reversible bit joined by stable stainless steel wire



ONLY
£22.95
+VAT



Code	Square Socket Ø	Triangle Socket Ø	T Key Ø	Square Key Ø	Radiator Key Ø	1+
1711-6066	5/6-7/8-9/10-11 mm	7-8/9-10 mm / 11-12 mm	3-5 mm	6-9 mm	6 mm	£22.95

SPRING CLAMPS

- Made of strong and rugged heavy-duty plastic
- Movable tips for maximum flexibility and tension
- Tempered steel spring applies consistent pressure
- Provides instant holding power and is easy to reposition during assembly, fastening and gluing work



FOLDING UTILITY KNIFE



- Quick-change blade mechanism
- Blade locks in to position to ensure a stable cut



FROM
£2.75
+VAT

Code	Capacity	1+	10+
2578-7818	65 mm	£2.75	£2.50
2578-7821	100 mm	£4.25	£3.95



2373-7483
ONLY
£12.95
+VAT

Includes:
■ 5 x Spare blades

18 PCE MULTI-BIT RATCHET STUBBY SCREWDRIVER

- Ratcheting mechanism allows user to work rapidly and efficiently
- Forward and reverse selector
- Magnetic shaft for secure bit retention

Includes:

- Phillips: PH1, PH2 and PH3
- Pozzi: PZ1, PZ2 and PZ3
- Slotted: SL3, SL4 and SL5 mm
- Sockets: 8, 10 and 13 mm
- Torx: T10, T15, T20 and T25
- 1/4" Hex x 1/4" square adaptor
- Storage can



2641-1953
ONLY
£9.25
+VAT



ALCOHOL GEL HAND SANITISER

- Contains 70% alcohol
- Proven to kill viruses and bacteria
- No-rinse formula
- Fragrance free
- EN 1276 and EN 1500



ONLY
£1.50
+VAT

Code	Lid Type	Size	1+
2634-3874	Flip Top	100 ml	£1.50

ANTIBACTERIAL WIPES

- Powerful antibacterial and antiviral formula to disinfect hands and surfaces
- Kills 99.99% of bacteria
- Dermatologically tested
- Contains Aloe Vera extract
- Pack quantity: 90 Wipes
- EN 1276, EN 13727 and EN 14476



2634-3925
ONLY
£5.25
+VAT

HYGIENE ROLLS

- General purpose, highly absorbent paper rolls
- Can be dispensed from the outside or from the centre once the cardboard core has been removed
- Recycled material
- Pack of 1



ONLY
£3.95
+VAT

Code	Description	Length	Width	1+
2633-0611	2 Ply	150 m	178 mm	£3.95

HEAVY-DUTY WIPES

BIG WIPES

- Wipes have scrub and smooth sides
- Scrub face: A super tough cloth that loosens even the most stubborn grime and guarantees faster removal
- Smooth face: Absorbs the grime for a super clean finish
- Dermatologically tested
- Antibacterial action
- Removes paint, adhesives, epoxy, PU foam, oil, grease, and more from hands, tools and surfaces



ONLY
£10.50
+VAT

Code	Pack	1+	6+
1462-6369	80 Wipes	£10.50	£9.95

16 OZ BLACK RUBBER Mallet



- Solid rubber head
- Varnished hardwood shaft
- Face: 55 mm(Ø)



0175-0426
ONLY
£2.50
+VAT

2.5 LB Lump Hammer



- Forged carbon steel head
- Fibreglass handle absorbs shock and vibration
- Textured rubberised grip for comfort



2363-2900
ONLY
£11.95
+VAT

DUSTPAN



- Pressed steel head with durable hardwood handle
- Raised shoulders to eliminate spillage



0414-1930
ONLY
£3.50
+VAT

SOFT COCO HAND BRUSH



- Made from rubberwood with soft coco bristles



0454-8733
ONLY
£1.50
+VAT